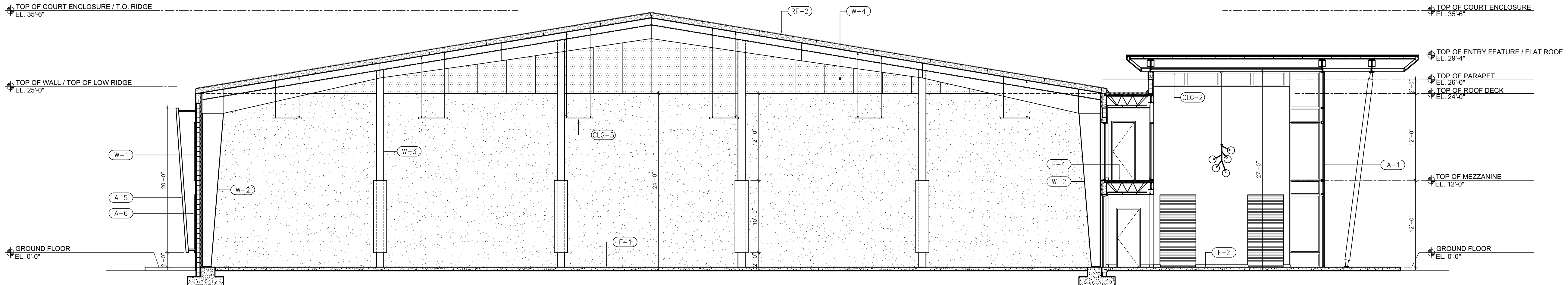
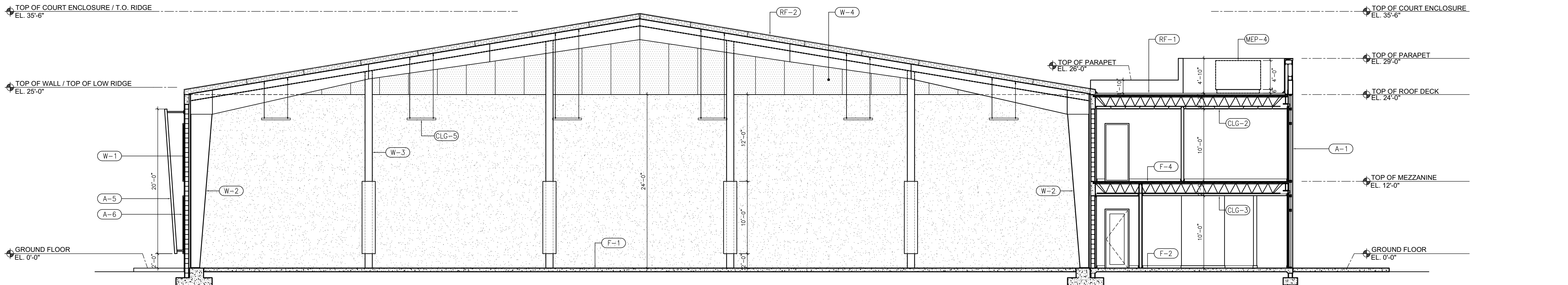


1  
A4.01  
BUILDING SECTION  
SCALE: 1/8"=1'-0"



2  
A4.01  
BUILDING SECTION  
SCALE: 1/8"=1'-0"



3  
A4.01  
BUILDING SECTION  
SCALE: 1/8"=1'-0"

- KEYNOTES:**  
All keynotes may not apply.  
(X-X) KEYNOTE TYPE
- ACCESSORIES**
- A-1 EXTERIOR IMPACT RESISTANT STOREFRONT, SEE SCHEDULE
  - A-2 EXTERIOR IMPACT RESISTANT WINDOW, SEE SCHEDULE
  - A-3 EXTERIOR IMPACT RESISTANT STOREFRONT W/DOUBLE DOOR, SEE SCHEDULE
  - A-4 EXTERIOR IMPACT DOOR, SEE SCHEDULE
  - A-5 EXTERIOR PRE MANUFACTURE ALUMINUM WALL CLADDING, SUBMIT SHOP DRAWINGS
  - A-6 EXTERIOR DECORATIVE SPANDREL WINDOW
  - A-7 HEAVY DUTY WINDER WAVE BIKE RACK (18 LOOPS 20 BIKES) INGROUND MOUNT POWDER COATED W/GROUT COVER
  - A-8 BUILT-IN MILLWORK DISPLAY CASE BY OTHERS, SUBMIT SHOP DRAWINGS
  - A-9 NEW 36" HIGH ANODIZED CLASS-1 ALUMINUM CONTINUOUS HANDRAIL (DETAILS AND CONNECTIONS PER MANUFACTURE), SEE DTLS AT SHEET A6.0
  - A-10 NEW 36" HIGH ANODIZED CLASS-1 ALUMINUM CONTINUOUS HANDRAIL WITH 42" HIGH GUARDRAIL, SEE ARCH DTLS (DETAILS AND CONNECTIONS PER MANUF.) SEE DTLS AT SHEET A6.0
  - A-11 NEW HI-LOW REFRIGERATED ADA DRINKING FOUNTAIN WITH BOTTLE FILLING STATION BY ELKAY OR SIMILAR
  - A-12 LINE OF DROPPED CEILING ABOVE, SEE RCP PLANS
  - A-13 LINE INDICATES HEADER ABOVE, SEE RCP PLANS
  - A-14 LINE OF ROOF ABOVE
  - A-15 34" MAX. HEIGHT VANITY ENGINEERING STONE TOP WITH UNDERMOUNT STAINLESS STEEL SINK BUILT-IN MILLWORK BELOW, SEE I.D. PLANS FOR FINISHES.
  - A-16 NEW MIRROR TO BE AT 40" MAX TO THE BOTTOM OF REFLECTIVE AREA, PROVIDE BACKING AS NECESSARY, SEE I.D. PLANS FOR FINISH AND SELECTIONS.
  - A-17 TYPICAL ACCESSIBLE GRAB BARS COMPLYING WITH ADA FBC 2020. (WALL MOUNT GRAB BARS SEE DETAIL A6.0)
  - A-18 SCHULTER-SCHNEIE TILE TRANSITION STRIP OR SIM.
  - A-19 6" HG WOOD BASE, SEE DETAIL
  - A-20 NEW STUCCO SILL BAND, SEE DETAIL 7-A6.0
  - A-21 VENDING MACHINE
- WALL FINISHES**
- W-1 NEW 8" CONCRETE BLOCK WALL WITH (2 COATS) CEMENTITIOUS FINISH (STUCCO), SEE WALL SCHEDULE FOR INTERIOR FINISHES.
  - W-2 STEEL RIGID FRAME STRUCTURE, SEE STRUCTURAL PLANS
  - W-3 STEEL COLUMN, SEE STRUCTURAL PLANS
  - W-4 EXTERIOR METAL PANEL WITH SINGLE LAYER OF UNFACED INSULATION SECURED IN BETWEEN INTERIOR FRAMING AND ENERGY SAVER FABRIC INSTALLED AT INTERIOR SIDE OVER THE TOP OF FRAMING, STEEL BANDS ARE INSTALLED TO PROVIDED ADDITIONAL SUPPORT, SUBMIT SHOP DWGS.
  - W-5 INTERIOR PARTITION WITH ACOUSTICAL INSULATION WHERE IS NOTED, NON LOAD BEARING METAL STUD INTERIOR FRAMING WITH 5/8" DRYWALL
  - W-6 NEW EXTERIOR METAL COLUMN
  - W-7 5/8" G.W.B. ON 1 5/8" 18 GA MIL FURRING AT 16" O.C. WITH R-4.1 REFLECTED FOIL INSULATION
  - W-8 PROVIDED 48" HEIGHT TILE FINISH ON 5/8" DUROCK TILE BAKER BOARD THEN GREEN BOARD ABOVE WITH LATEX FINISH PAINT ON GALV. STEEL STUD (25 GA)

- CEILING**
- CLG-1 EXPOSED STRUCTURE ABOVE TO BE PAINTED WHITE COLOR
  - CLG-2 2x2 ACOUSTICAL SUSPENDED CEILING TILE
  - CLG-3 1 LAYER OF 5/8" FINISH GYP BOARD ATTACHED TO STUD OR JOIST MEMBER AS REQUIRED, SEE SCHEDULE
  - CLG-4 1 LAYER OF 5/8" FINISH MOISTURE GYP BOARD ATTACHED TO STUD OR JOIST MEMBER AS REQUIRED.
  - CLG-5 TENNIS COURT LIGHTING (SEE RCP A2.11 FOR DETAILS)
  - CLG-6 ENERGY SAVER INSULATION SYSTEM

- FOUNDATION / FLOOR SYSTEM**
- F-1 CONCRETE HARD COURT SURFACE COVERED WITH ACRYLIC RESINS TO SEAL THE SURFACE AND MARK PLAYING LINES
  - F-2 NEW 5" CONCRETE SLAB ON 6 MIL VAPOR BARRIER - LAP SEAMS 12" AND TAPE - ON COMPACTED - TERMITES TREATED FILL SEE STRUCT. FOR SLAB THICKNESS AND STEEL PLACEMENT
  - F-3 NEW CONCRETE SIDEWALK POURED-IN PLACE WITH SLOPE
  - F-4 AERIAL PRECAST CONCRETE FLOOR SYSTEM, SEE STRUCTURAL
  - F-5 CONCRETE LANDING ON GALVANIZED METAL DECK, STEEL SHOP DWG'S TO BE PROVIDED FOR REVIEW AND APPROVAL
  - F-6 STEEL PAN AND STEEL RISER WITH CONCRETE TREADS 1" OVERHANG TYP, STEEL SHOP DWG'S TO BE PROVIDED FOR REVIEW AND APPROVAL

- ROOF**
- RF-1 TPO ROOFING SYSTEM ON ISO INSULATION ON METL DECK AND METAL JOISTS, SUBMIT SHOP DRAWINGS
  - RF-2 WHITE STANDING SEAM METAL ROOFING PANEL OVER STEEL RIGID FRAME STRUCTURE WITH UNFACED INSULATION BLANKETS OVER ENERGY SAVER FABRIC INSTALLED WITH A NETWORK OF STEEL BANDING, SUBMIT SHOP DWGS
  - RF-3 ROOF DRAIN, SEE MEP DWGS
  - RF-4 ROOF OVERFLOW SCUPPER, SEE MEP DWGS
  - RF-5 RAIN WATER LEADER, SEE MEP DWGS FOR SIZE AND CONNECTIONS
  - RF-6 ALUMINUM GUTTER
  - RF-7 ALUMINUM DOWNSPOUT
  - RF-8 24"x30" GALVANIZED ROOF ACCESS HATCH TO COMPLY FBC 1015.7

- MECHANICAL / ELECTRICAL / PLUMBING**
- MEP-1 ELECTRIC METER
  - MEP-2 ELECTRICAL PANEL
  - MEP-3 CONDENSING UNITS SEATING ON CONCRETE SLAB WITH SCREEN GREEN VEGETATION 3" HIGH MINIMUM, SEE MEP AND LANDSCAPE DWGS
  - MEP-4 RTU UNITS SITTING ON ROOF CURB SCREENED BY PARAPET, SEE MEP DWGS AND DETAILS
  - MEP-5 FLOOR DRAIN

FLOOR:		WALL:	
FF-01 FLOOR	FF-02 BASE	WF-01 WALL	WF-02 CEILING
CONCRETE FLOOR WITH BROOM FINISH			
FF-01	FF-02	WF-01	WF-02
PORCELAIN TILE			
FF-01	FF-02	WF-01	WF-02
EXTERIOR PORCELAIN TILE			
FF-01	FF-02	WF-01	WF-02
CARPET TILE			
FF-01	FF-02	WF-01	WF-02
UNFINISHED CONC.			
FF-01	FF-02	WF-01	WF-02
BASE:			
BF-01	BF-02	CF-01	CF-02
6" WOOD BASE			
BF-01	BF-02	CF-01	CF-02
6" PORCELAIN TILE			
BF-01	BF-02	CF-01	CF-02
6" RUBBER COVE BASE			
BF-01	BF-02	CF-01	CF-02
NONE			
BF-01	BF-02	CF-01	CF-02

- ALTERNATES ALLOWED, MUST BE SUBMITTED FOR APPROVAL BY ARCHITECT, ID, AND OWNER PRIOR TO PROCUREMENT
- ALL FINISHES TO BE APPROVED BY OWNER PRIOR TO PROCUREMENT AND INSTALLATION
- COLORS AND TYPE TO BE DETERMINED AND SELECTED BY OWNER

PLAN LEGEND	
EXISTING CMU WALL TO REMAIN	NEW COLUMN
EXISTING INTERIOR FRAMING TO REMAIN	DOOR TYPE
NEW EXTERIOR CMU WALL	KEYNOTES
NEW EXTERIOR WOOD FRAMED WALL	WINDOW TYPE TAG
NEW INTERIOR FRAMING	WALL TYPE
NEW INTERIOR FRAMING TO BE SOUND INSULATED	PORTABLE FIRE EXTINGUISHER TYPE 2A 10LB. WITH CURRENT SERVICE RATED VOLTAGE, CABINET, OR APPROVED EQUAL
NEW SLAB	ALT. WALL HUNG I.E. NO CABINET AS LOCATIONS SELECTED BY OWNER

- NOTES:**
- ALL CASEWORK / MILLWORK DENOTED IS GENERAL IN SCOPE AND DESIGN. SUBCONTRACTOR IS TO PROVIDE DETAILED SHOP DRAWINGS FOR APPROVAL BY OWNER AND ARCHITECT PRIOR TO PROCUREMENT AND INSTALLATION.
  - CONTRACTOR TO VERIFY ALL FINISHES AND COLORS WITH OWNER, PRIOR TO PROCUREMENT AND APPLICATION
  - TYPICAL DIMENSIONS ARE NOMINAL. HOLD CLEAR DIMENSIONS ONLY WHERE INDICATED
  - CONTRACTOR TO VERIFY (VERIFY IN FIELD) ALL EXISTING DIMENSIONS AND COLUMN LINES PRIOR TO WORK. IF ANY DISCREPANCIES ARE FOUND NOTIFY ARCHITECT.
  - VERIFY ALL DIMENSIONS IN FIELD AND REPORT DISCREPANCIES OUTLET LOCATIONS HAVE BEEN SHOWN FOR COORDINATION ONLY. ELECTRICAL PLANS SUPERSEDES ARCHITECTURAL. ALL OUTLETS LOCATIONS TO BE CONFIRMED BY OWNER.
  - PROVIDE A NYLON REDUCER AT ALL THRESHOLDS AND AT ADJOINING DISSIMILAR FLOOR MATERIALS. PROVIDE A FLARED TILE REDUCER AT TILED THRESHOLDS. ALL CHANGES IN ELEVATION OR THRESHOLD SHALL BE 1/4" OR 3/8" WHERE A FLARED THRESHOLD EXISTS.

REVISIONS

1.
2.
3.
4.
5.
6.
7.
8.
9.
10.

ALL IDEAS, DESIGN, ARRANGEMENTS, AND PLANS INDICATED OR REPRESENTED BY THIS DRAWING ARE OWNED BY AND PROPERTY OF THIS OFFICE, AND WHERE CREATED, ENVELOPED, AND DEVELOPED FOR PROJECT. NONE OF SUCH IDEAS, DESIGN, ARRANGEMENTS, AND PLANS SHALL BE USED BY OR DISCLOSED TO ANY PERSON, FIRM, OR CORPORATION FOR ANY PURPOSE WITHOUT WRITTEN PERMISSION OF JUAN C. LINARES ARCHITECTURE, INC.



FLORIDA INDOOR TENNIS  
POMPAHO BEACH, FL 33069

3000 NORTH MILITARY TRAIL, SUITE 209  
BOCA RATON, FLORIDA 33431  
PHONE 561-391-0081 FAX 561-391-0085  
EMAIL mail@rwb-arch.com

RWB  
Linares  
ARCHITECTURE

PROJECT # 21-035  
DATE PER ISSUANCE  
SHEET #

A4.01

JUAN C. LINARES  
Digitally signed by Juan C Linares  
Date: 2023.12.05 08:44:04  
-05'00'  
AA26000640